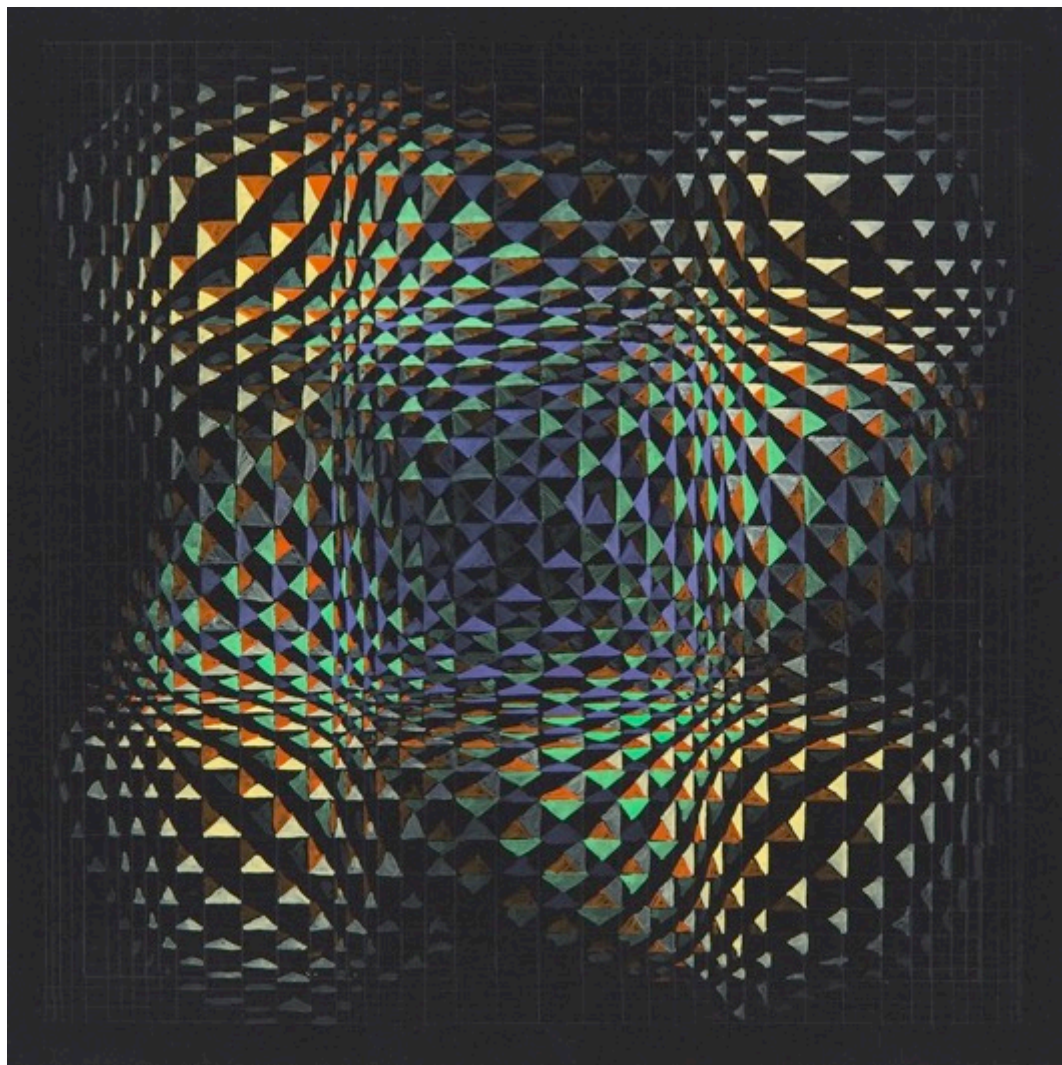


GALLERYSMITH
PROJECTSPACE

J U L I E B R O O K E

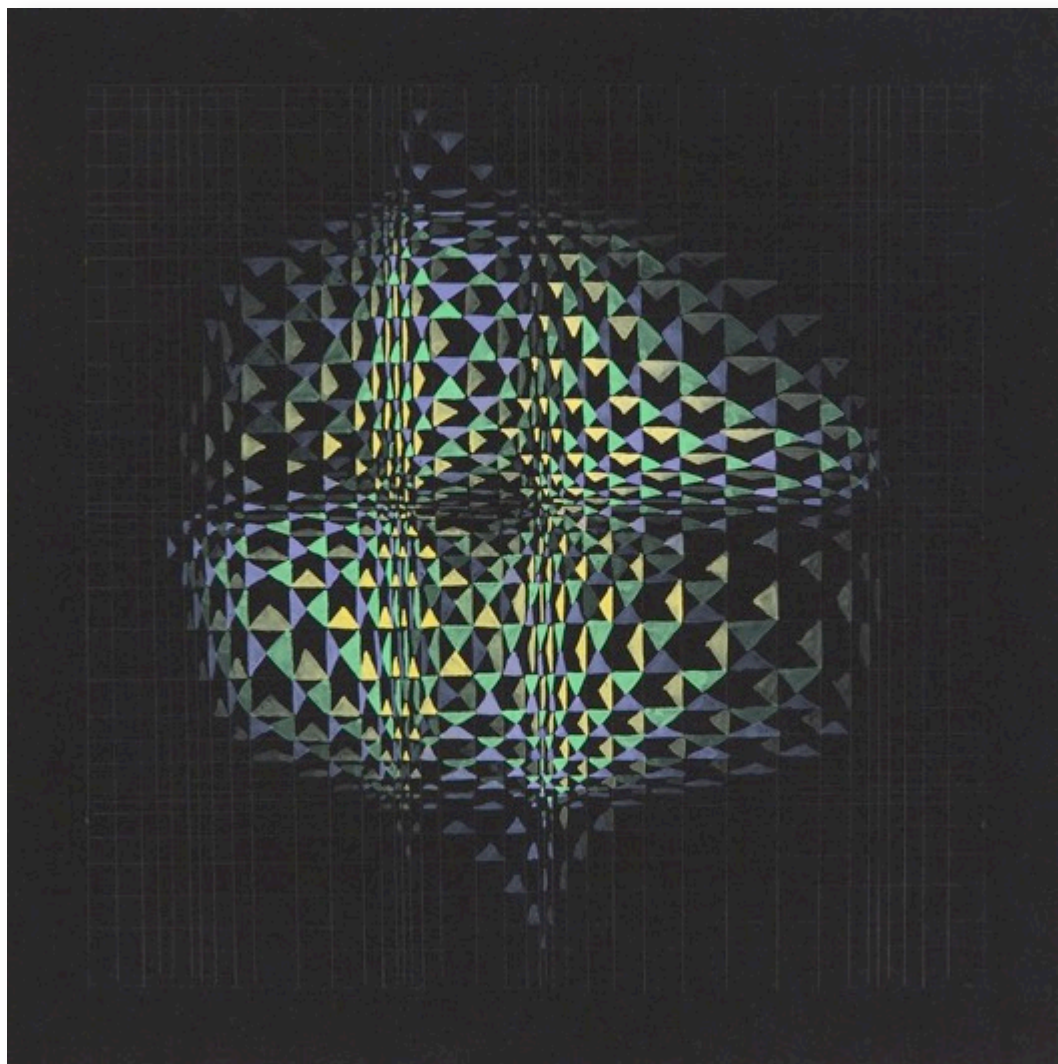
S U S A N B U R E T

T R I A N G U L A T I O N



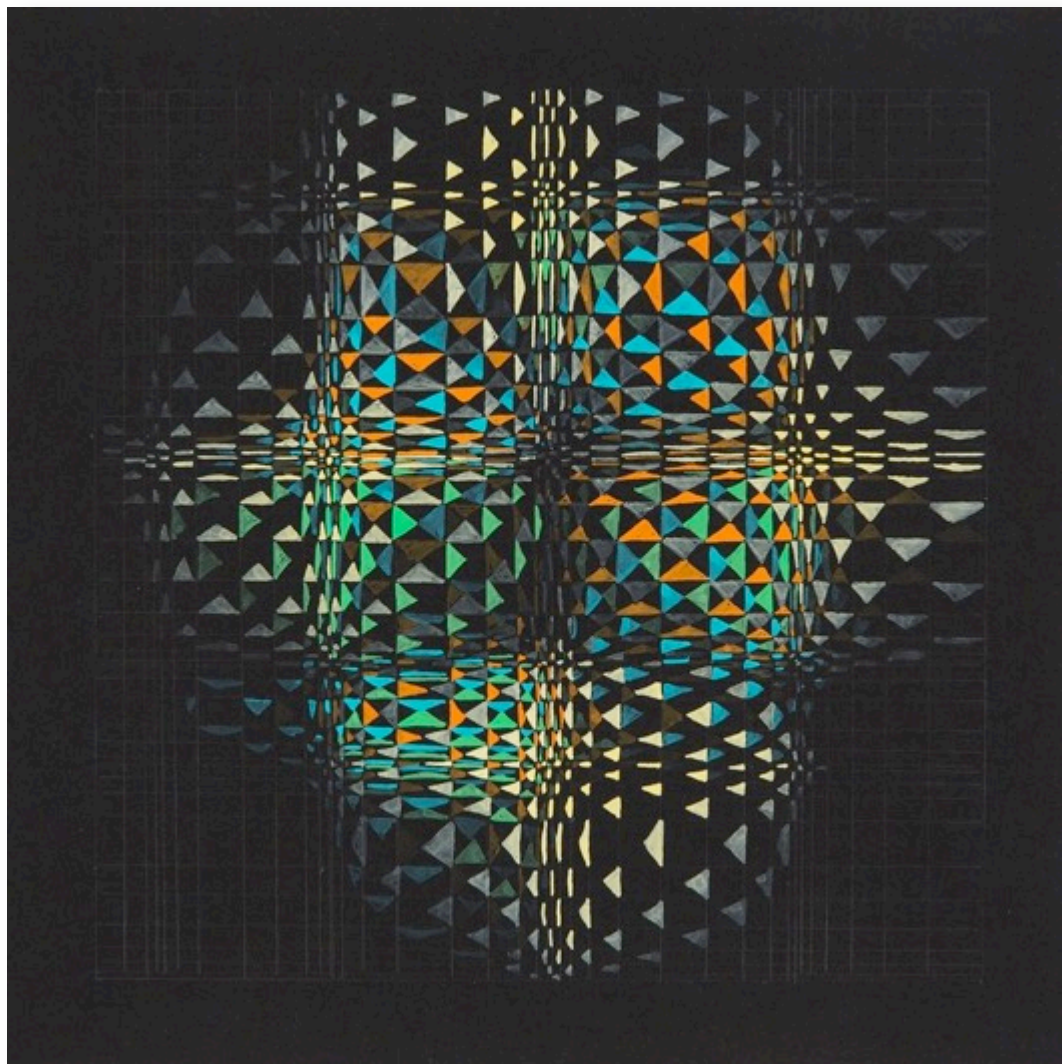
Julie Brooke
Entangled Labyrinth 1
2015, gouache and pencil on paper,
24x24cm

\$ 380



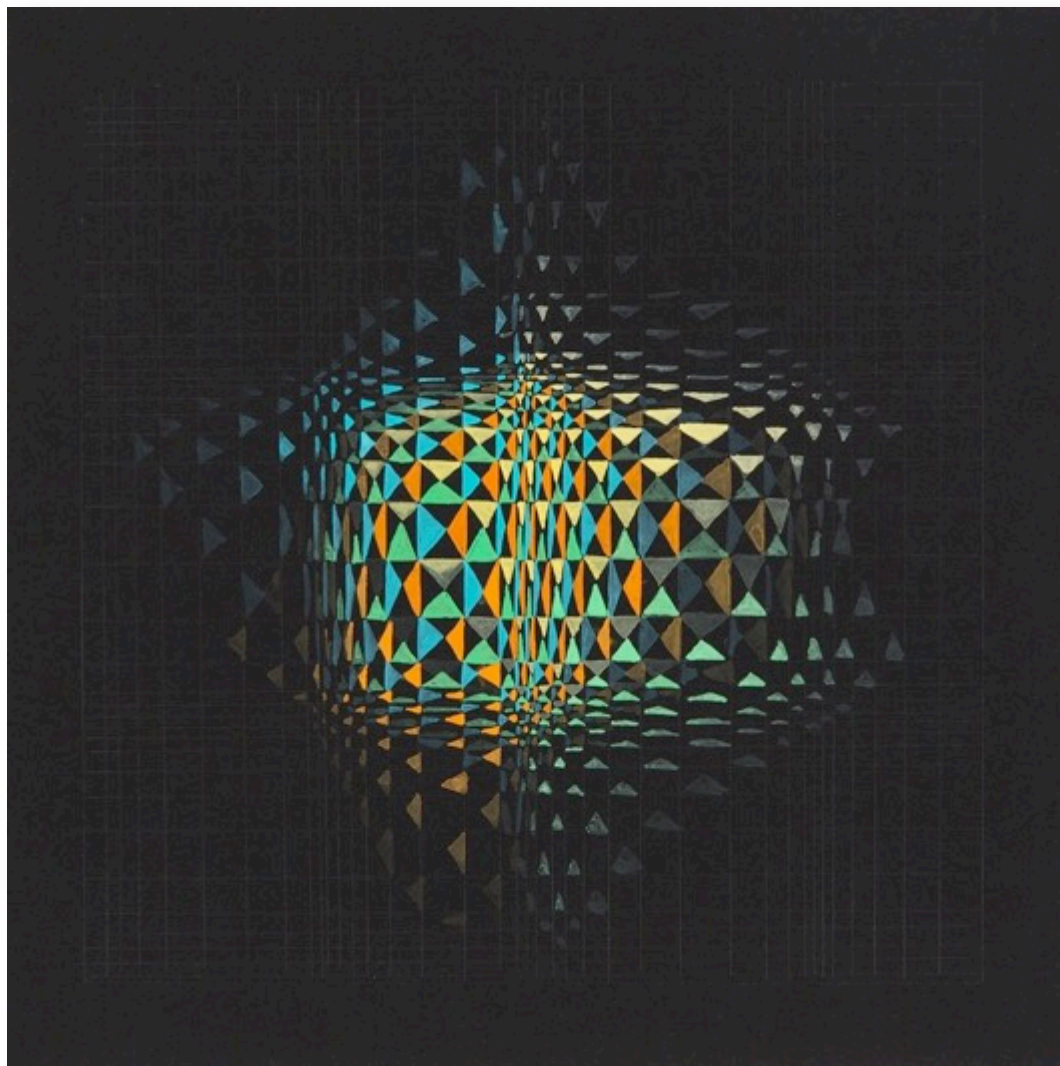
Julie Brooke
Entangled Labyrinth 2
2015, gouache and pencil on paper,
24x24cm

\$ 380



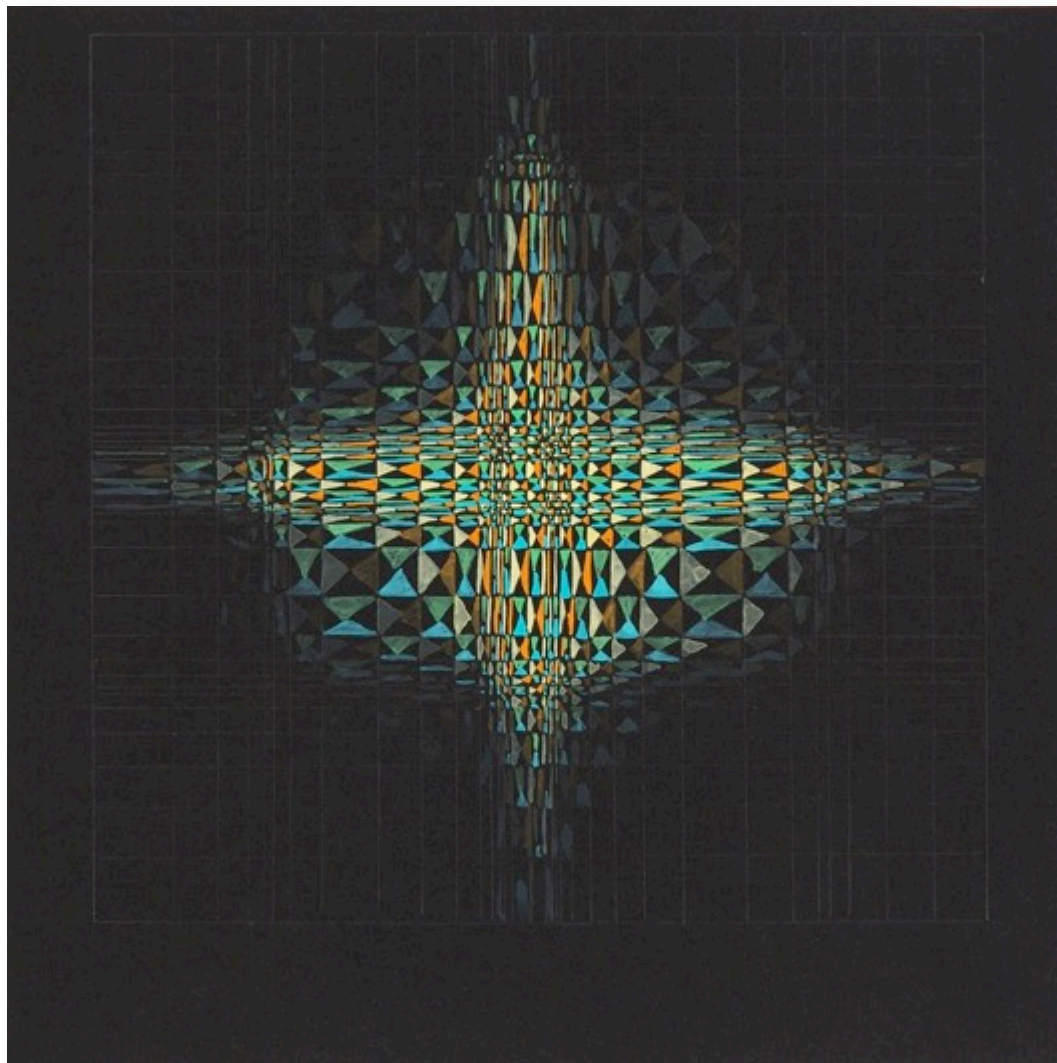
Julie Brooke
Entangled Labyrinth 3
2015, gouache and pencil on paper,
24x24cm

\$ 380



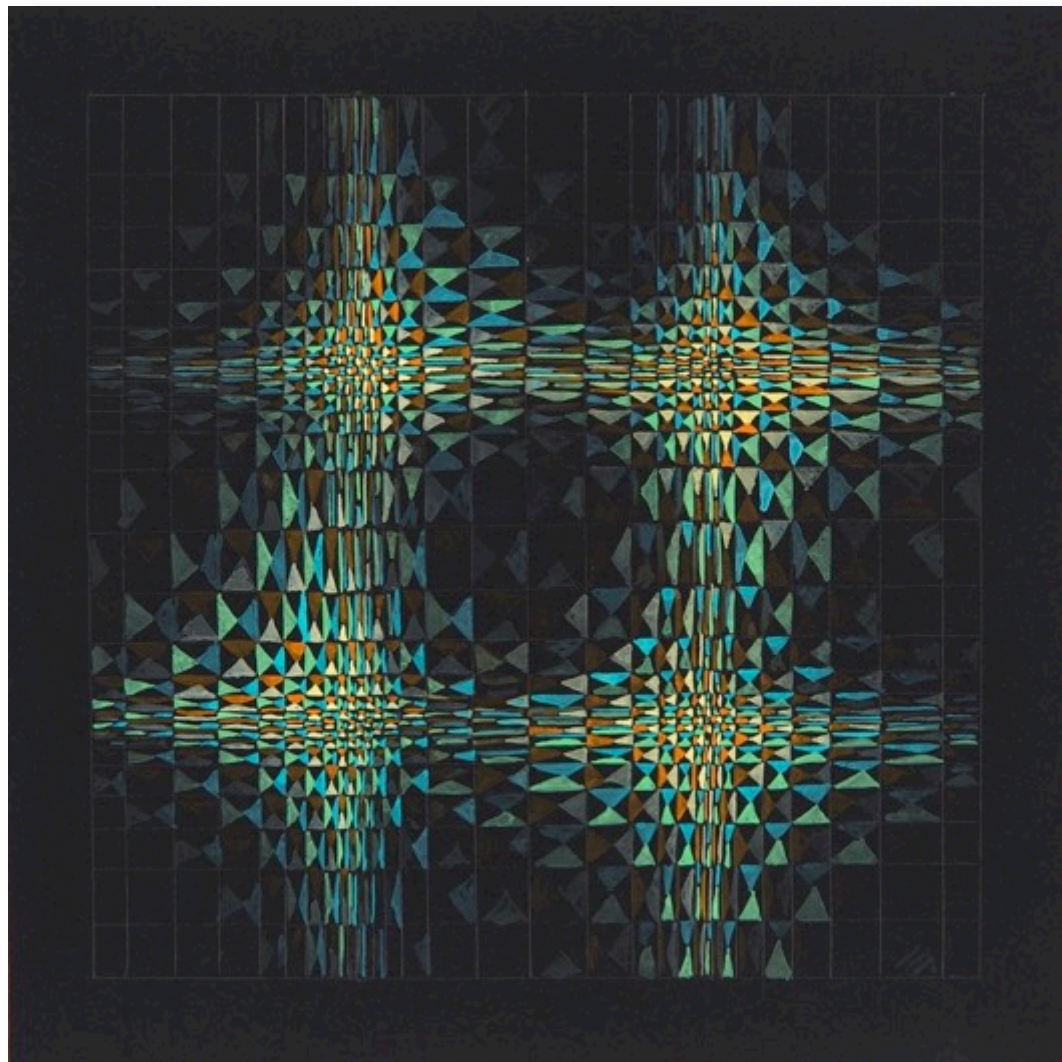
Julie Brooke
Entangled Labyrinth 4
2015, gouache and pencil on paper,
24x24cm

\$ 380



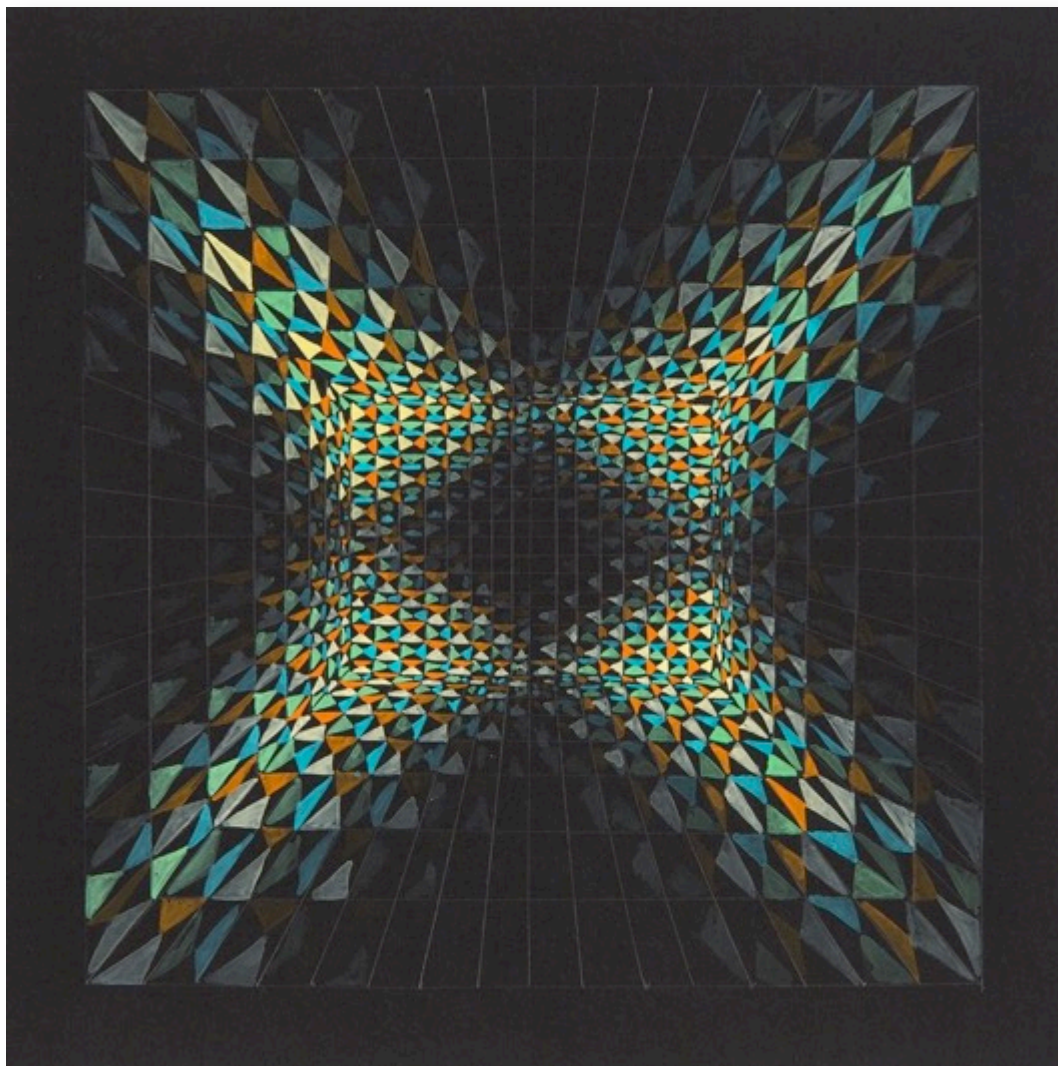
Julie Brooke
Entangled Labyrinth 5
2015, gouache and pencil on paper,
24x24cm

\$ 380



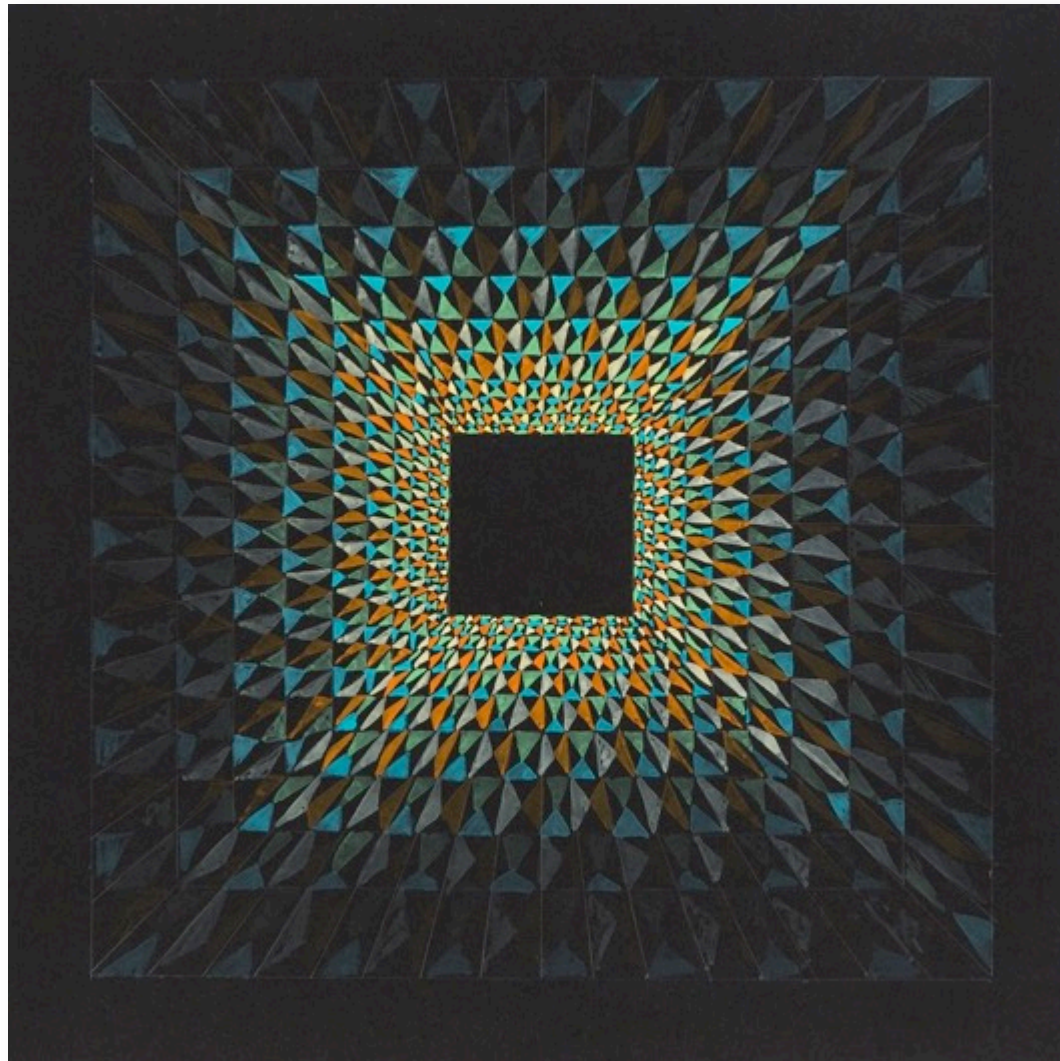
Julie Brooke
Entangled Labyrinth 6
2015, gouache and pencil on paper,
24x24cm

\$ 380



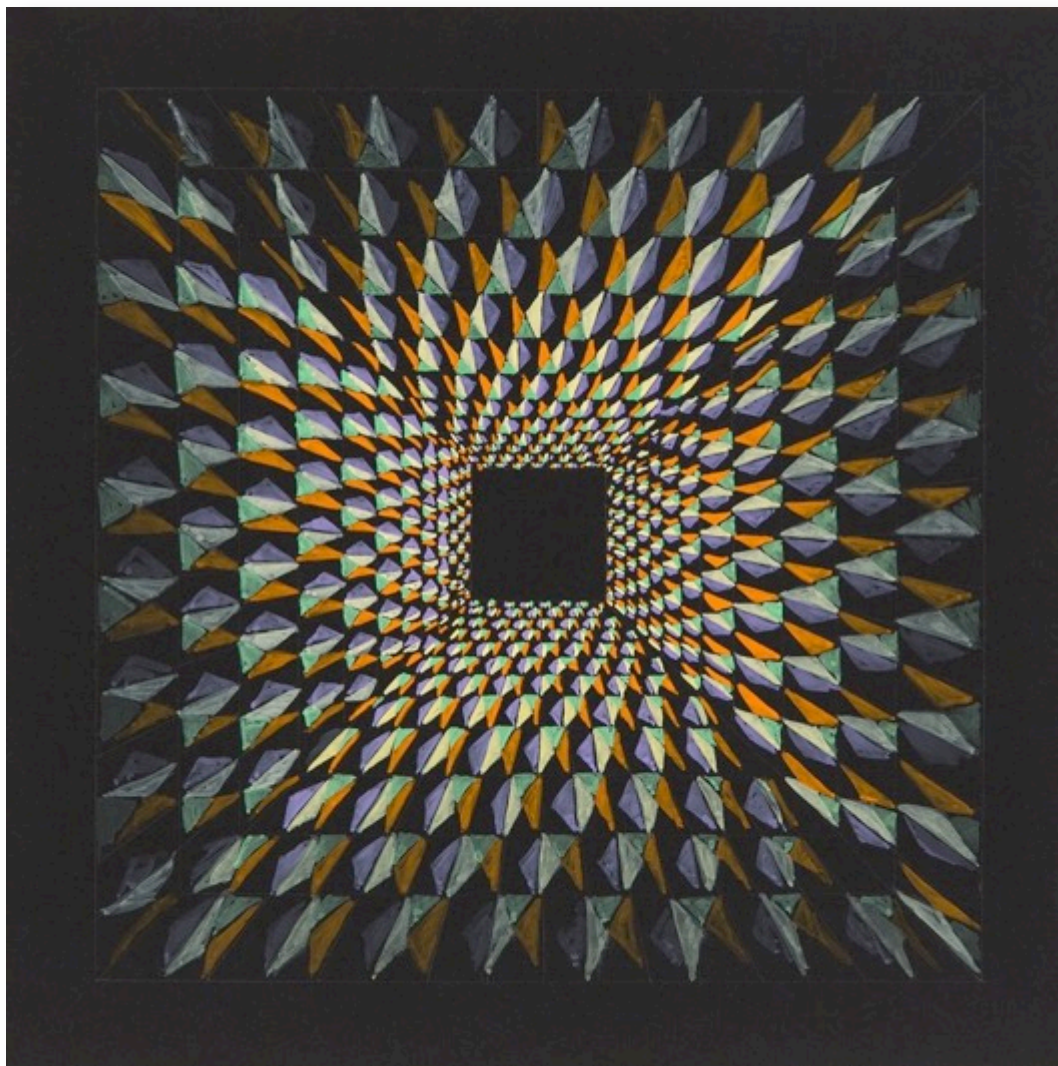
Julie Brooke
Entangled Labyrinth 7
2015, gouache and pencil on paper,
24x24cm

\$ 380



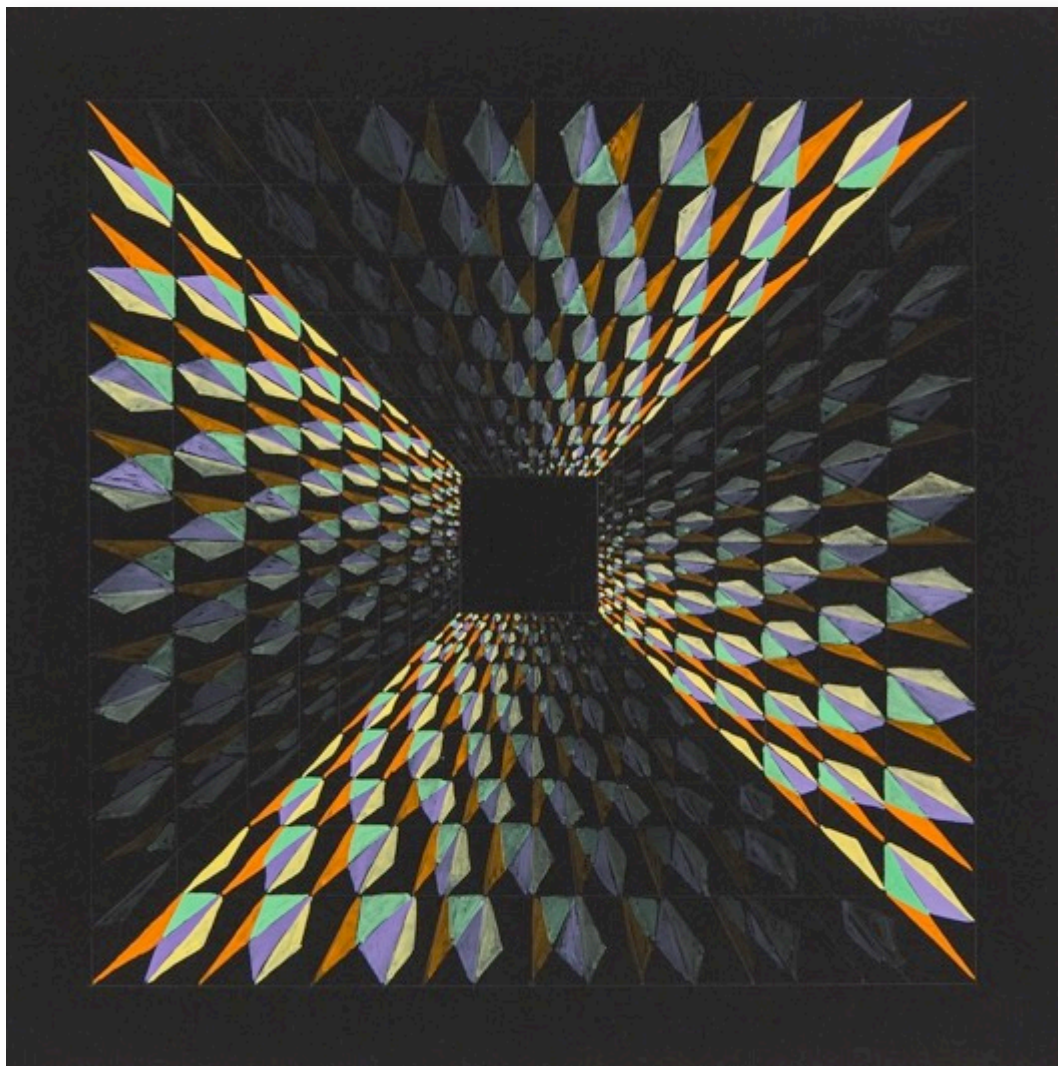
Julie Brooke
Entangled Labyrinth 8
2015, gouache and pencil on paper,
24x24cm

\$ 380



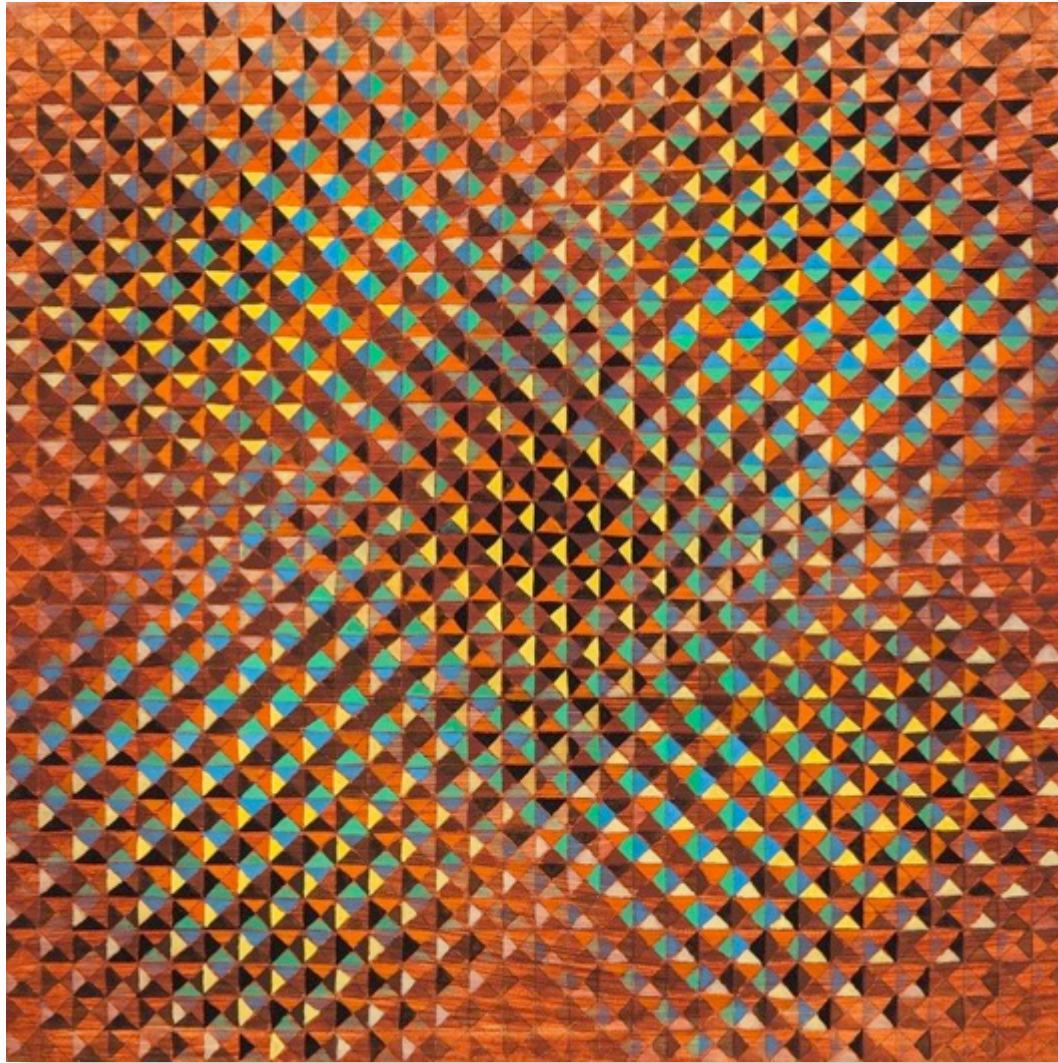
Julie Brooke
Entangled Labyrinth 9
2015, gouache and pencil on paper,
24x24cm

\$ 380



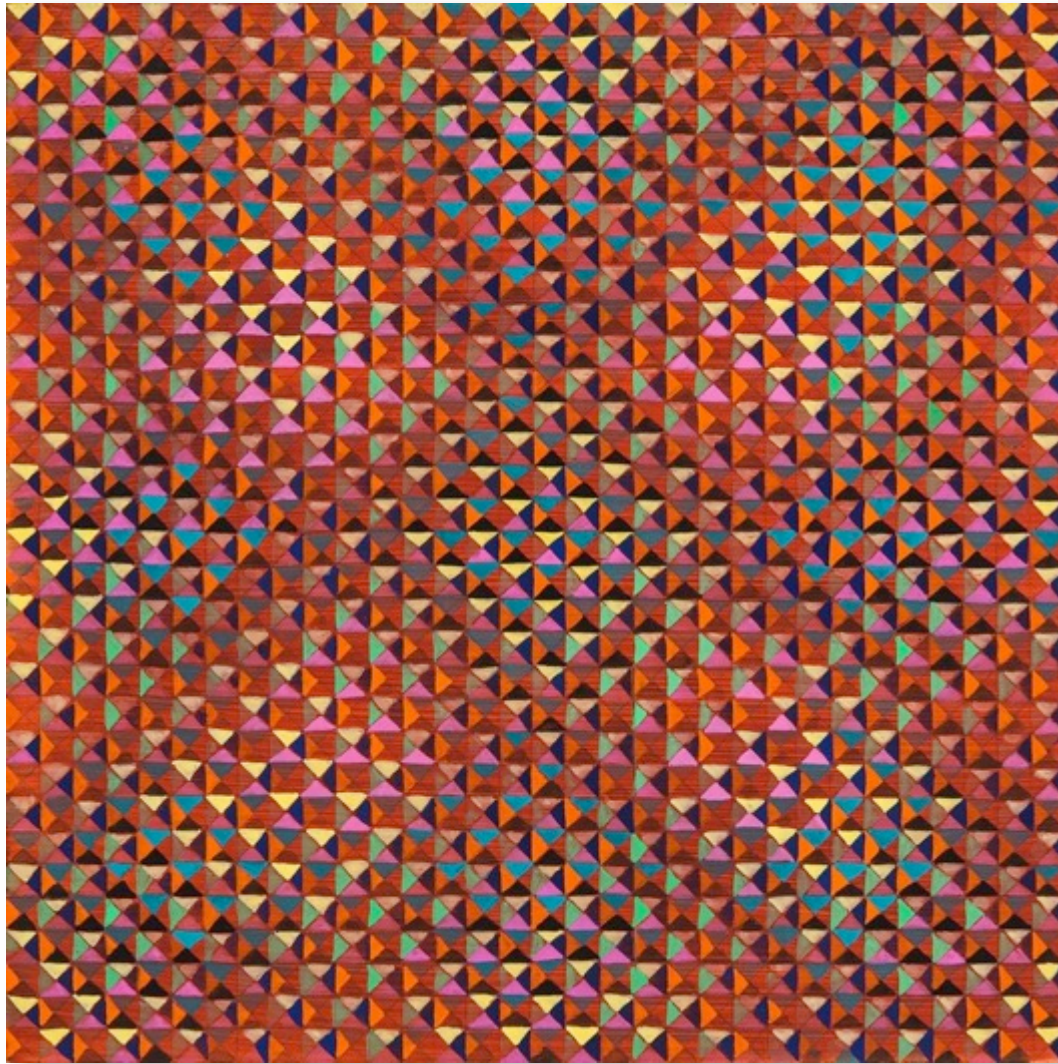
Julie Brooke
Entangled Labyrinth 10
2015, gouache and pencil on paper,
24x24cm

\$ 380



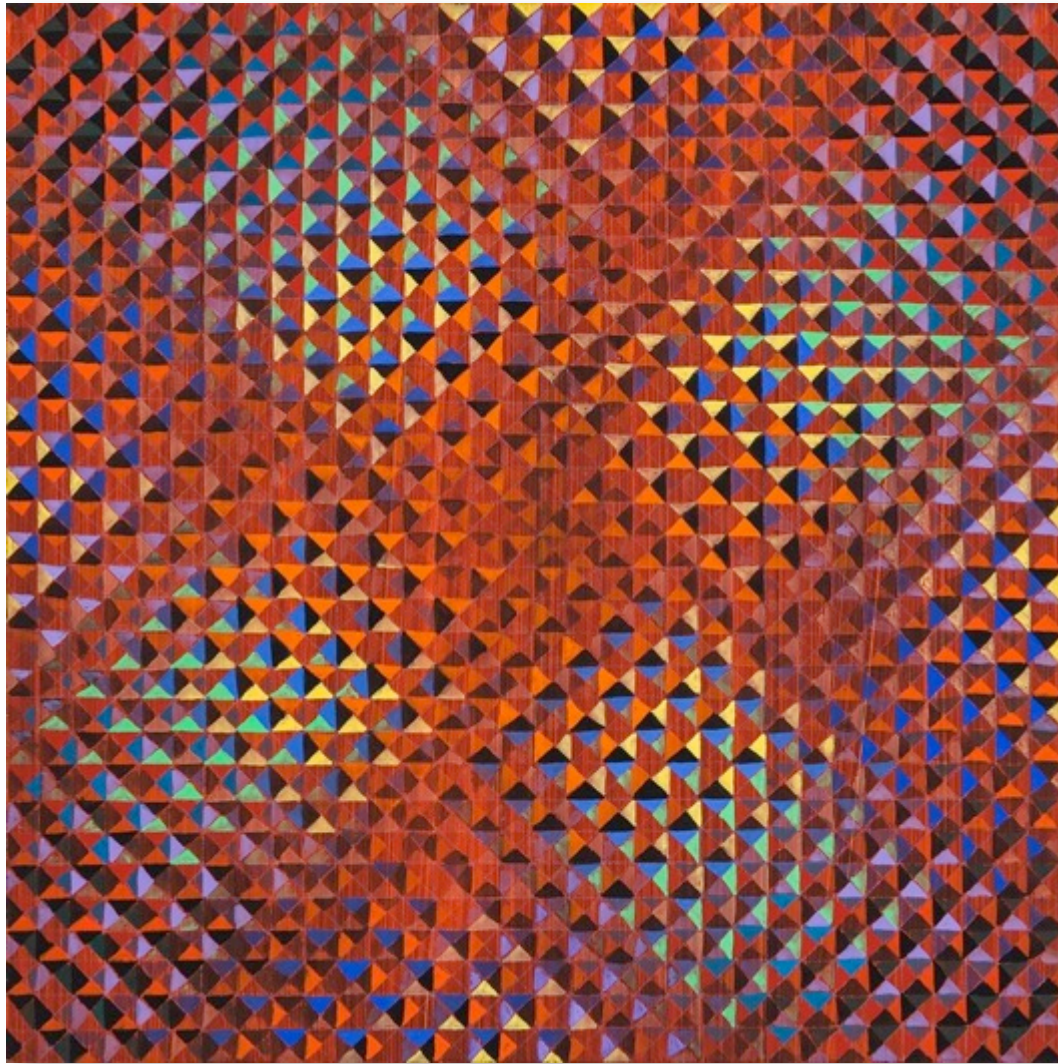
Julie Brooke
Minimal Surface 1
2015, gouache, acrylic and pencil on board,
30x30cm

\$ 850



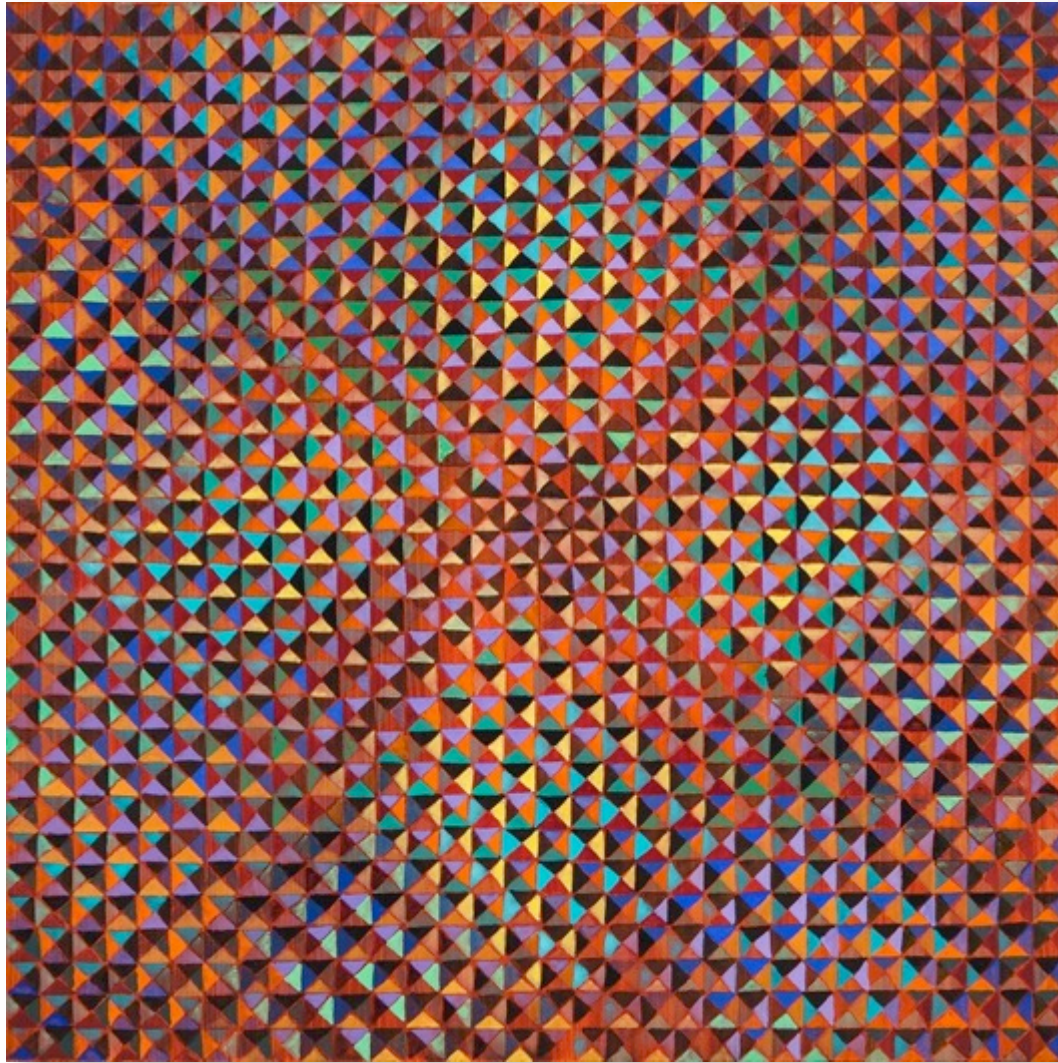
Julie Brooke
Minimal Surface 2
2015, gouache, acrylic and pencil on board,
30x30cm

\$ 380



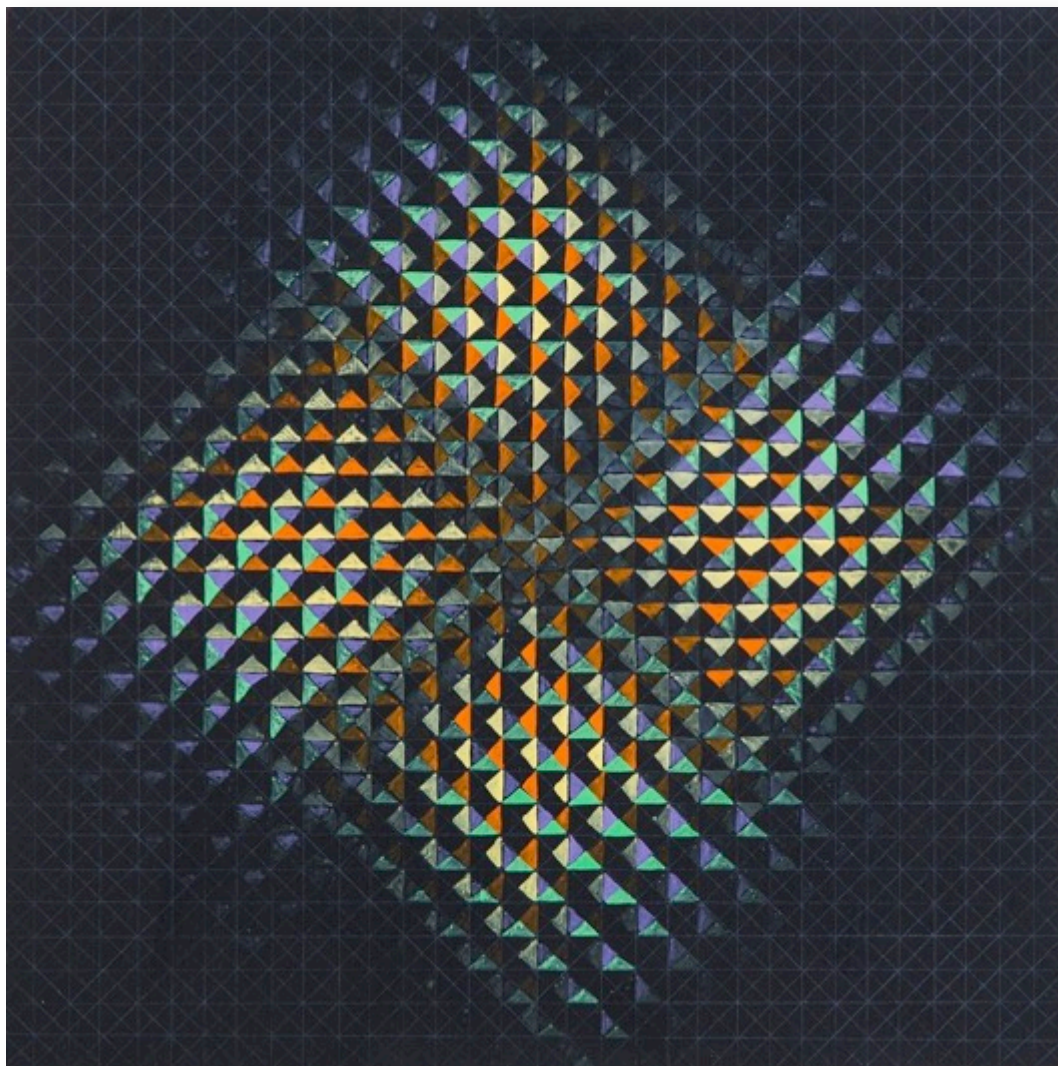
Julie Brooke
Minimal Surface 3
2015, gouache, acrylic and pencil on board,
30x30cm

\$ 850



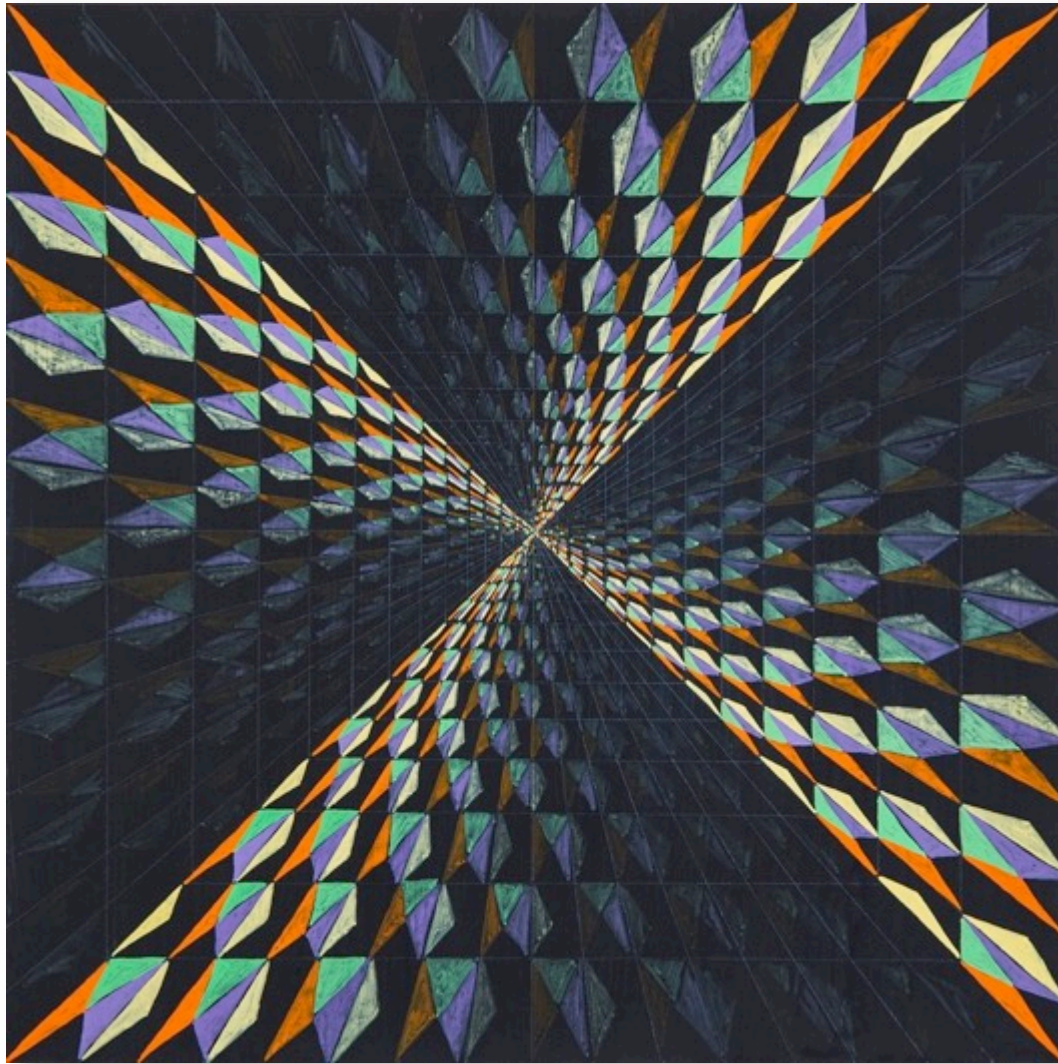
Julie Brooke
Minimal Surface 4
2015, gouache, acrylic and pencil on board,
30x30cm

\$ 850

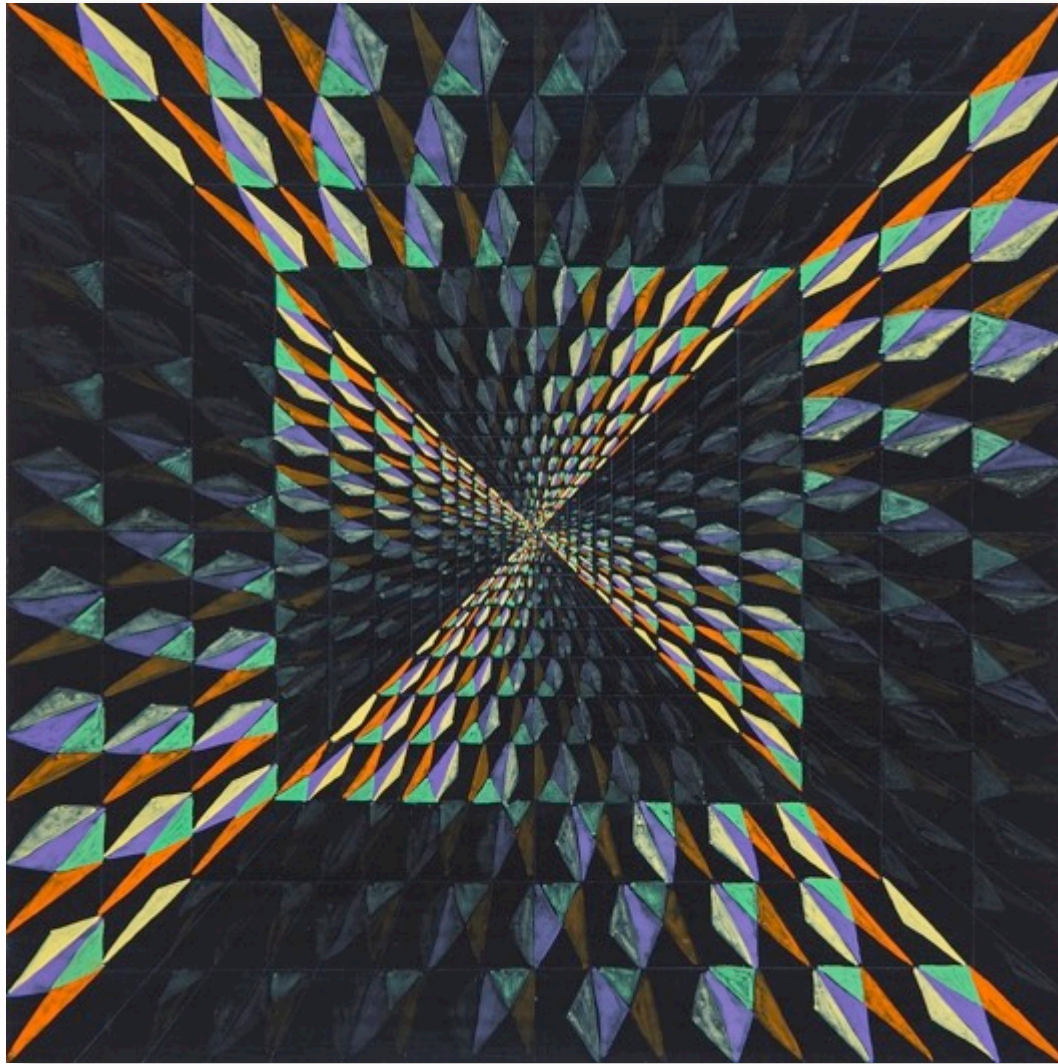


Julie Brooke
Minimal Surface 5
2015, gouache, acrylic and pencil on board,
30x30cm

\$ 850



Julie Brooke
Minimal Surface 6
2015, gouache, acrylic and pencil on board,
30x30cm



Julie Brooke
Minimal Surface 7

2015, gouache, acrylic and pencil on board,
30x30cm

\$ 850



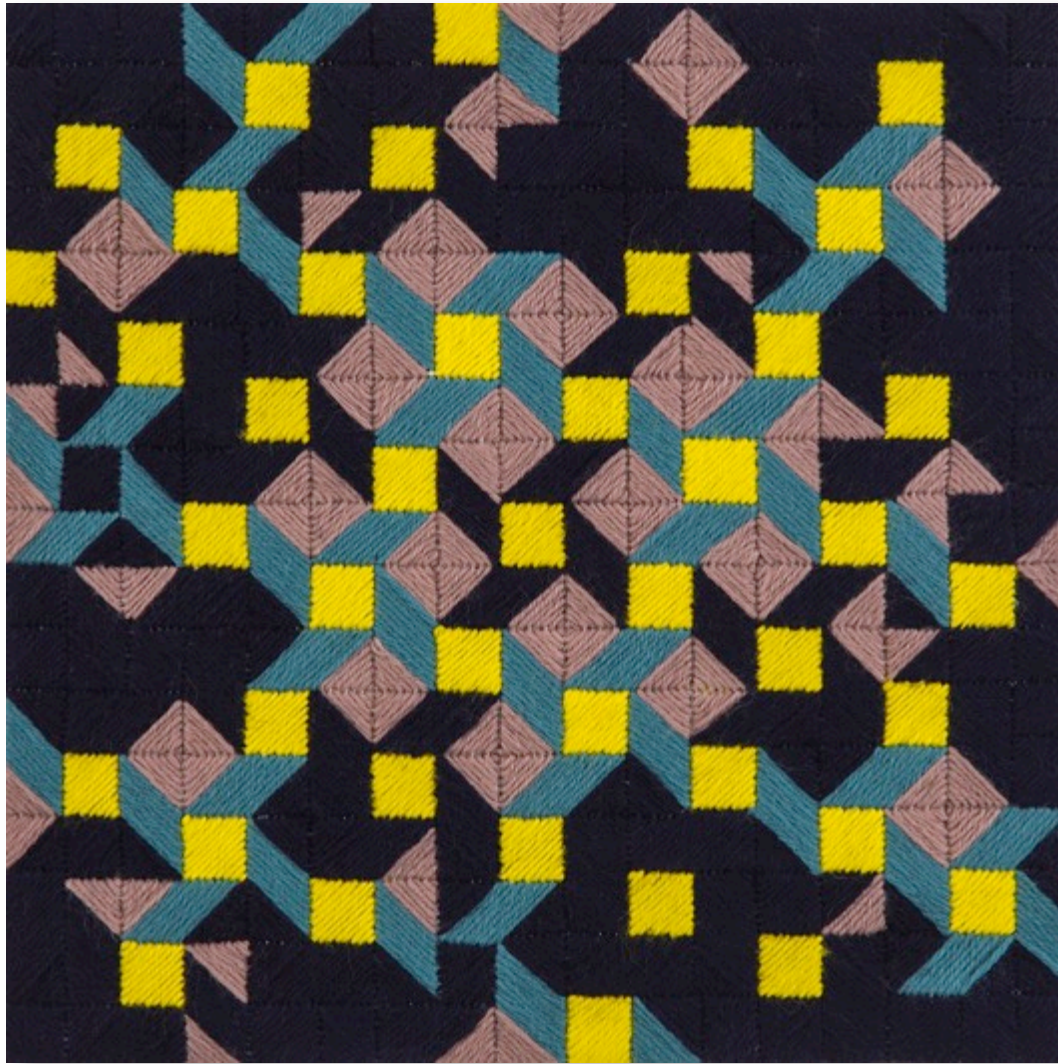
Susan Buret
Lepidoptera 1
2015, wool on canvas,
33x33cm

\$ 550



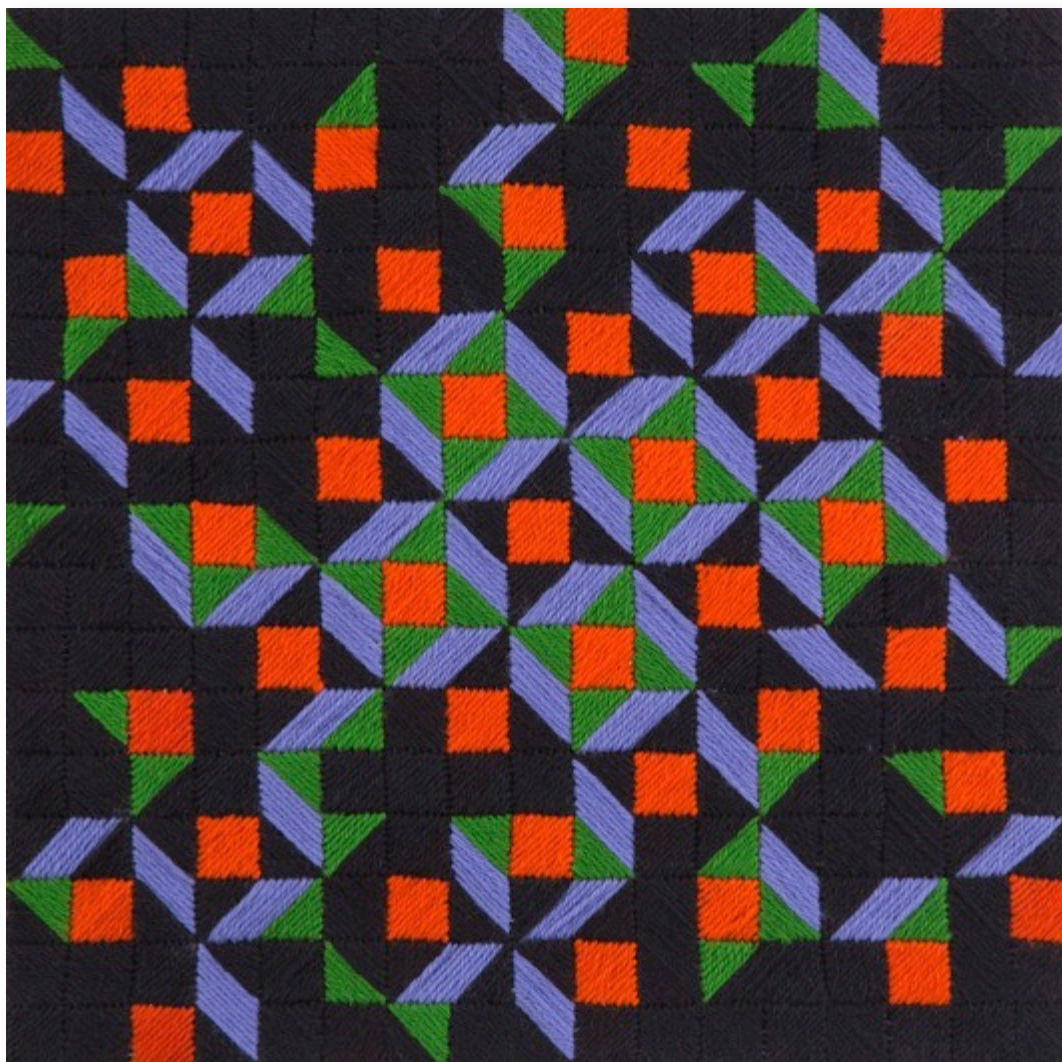
Susan Buret
Lepidoptera 2
2015, wool on canvas,
33x33cm

\$ 550



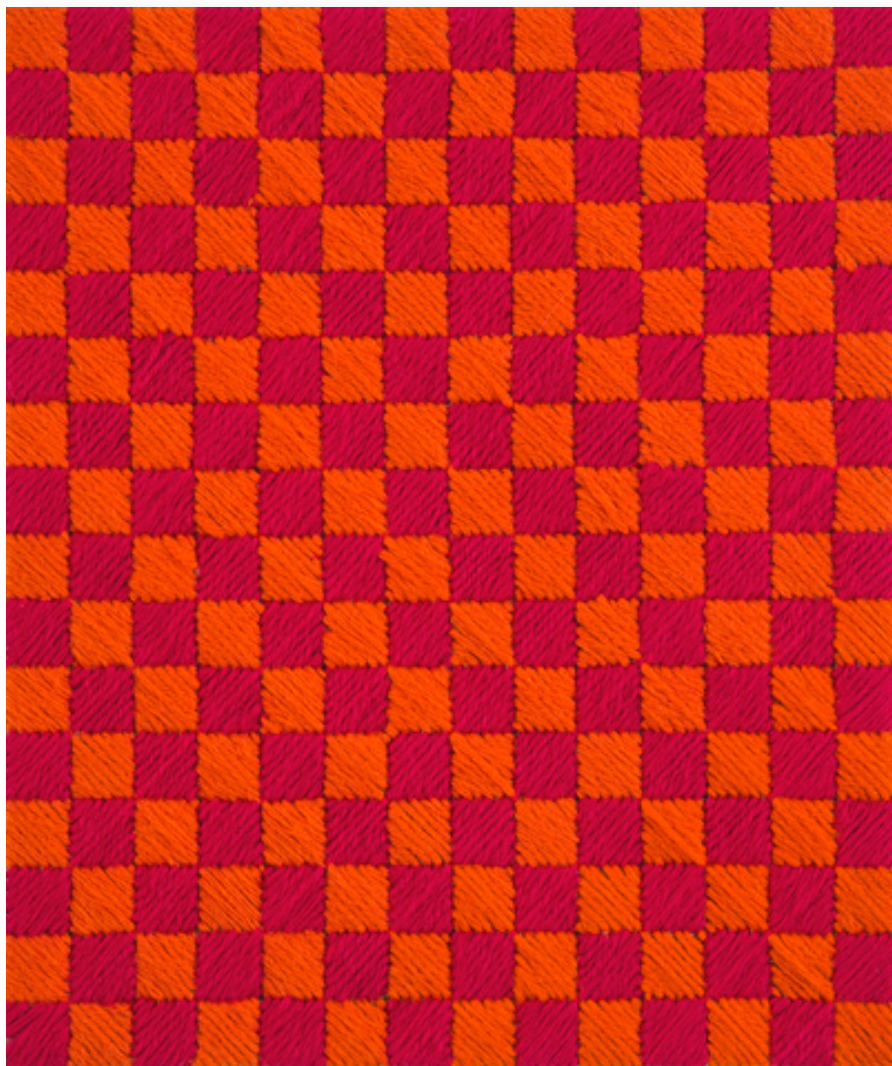
Susan Buret
Lepidoptera 3
2015, wool on canvas,
33x33cm

\$ 550



Susan Buret
Lepidoptera 4
2015, wool on canvas,
33x33cm

\$ 550



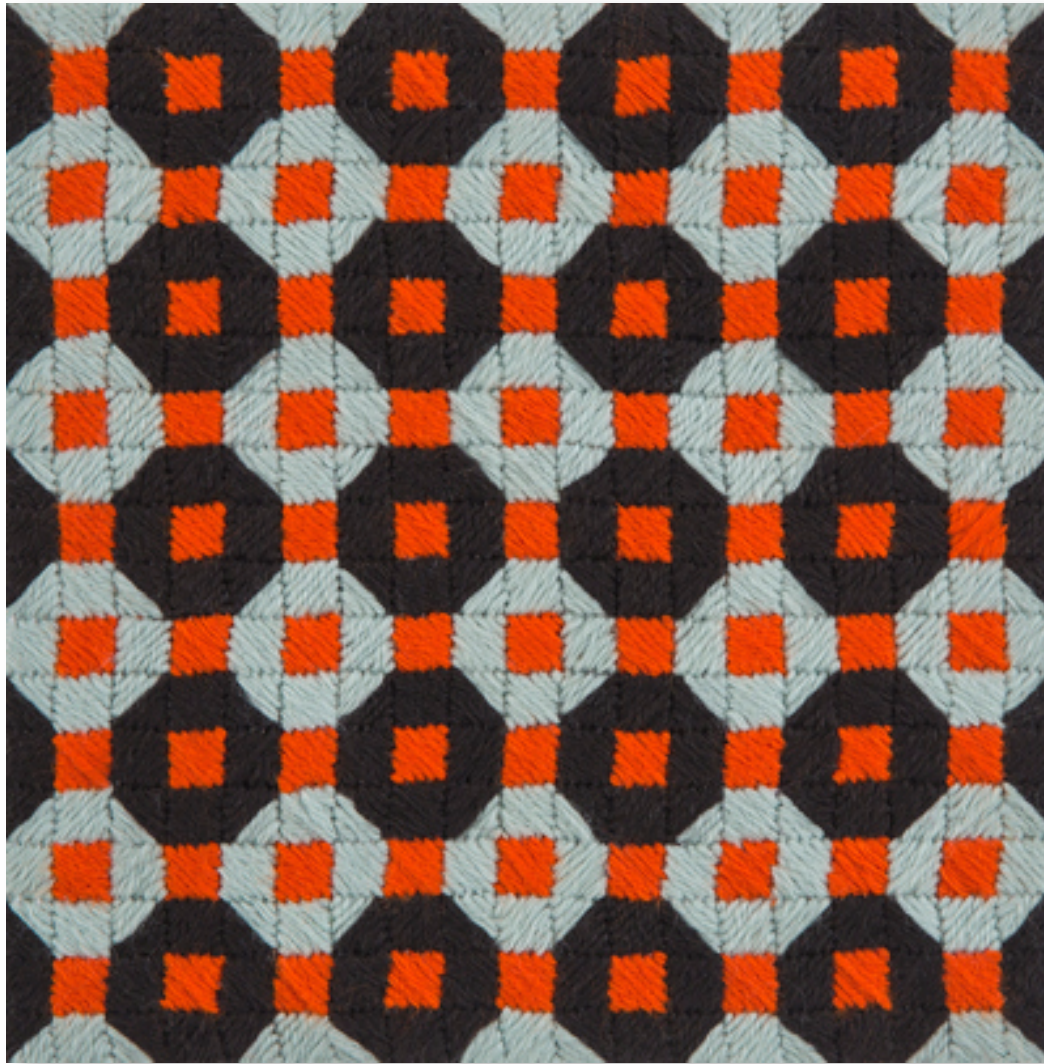
Susan Buret
Lepidoptera 5
2015, wool on canvas,
33x33cm

\$ 380



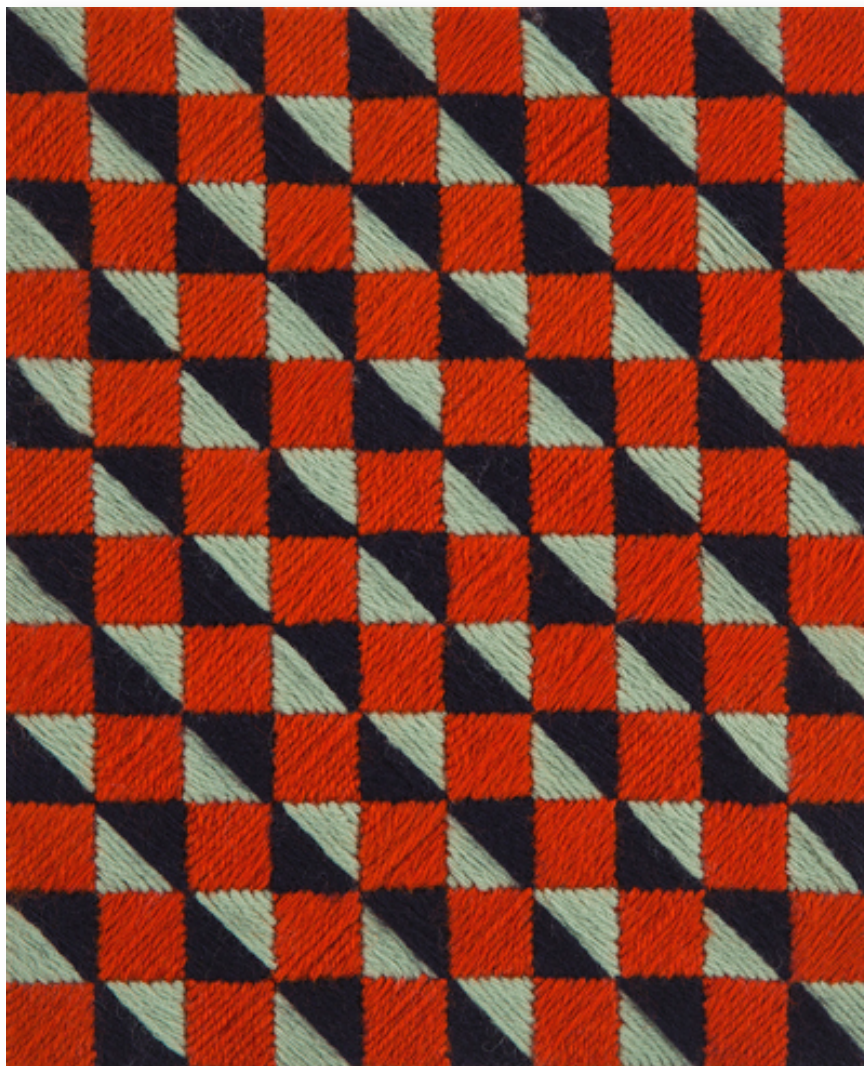
Susan Buret
Lepidoptera 6
2015, wool on canvas,
33x33cm

\$ 380



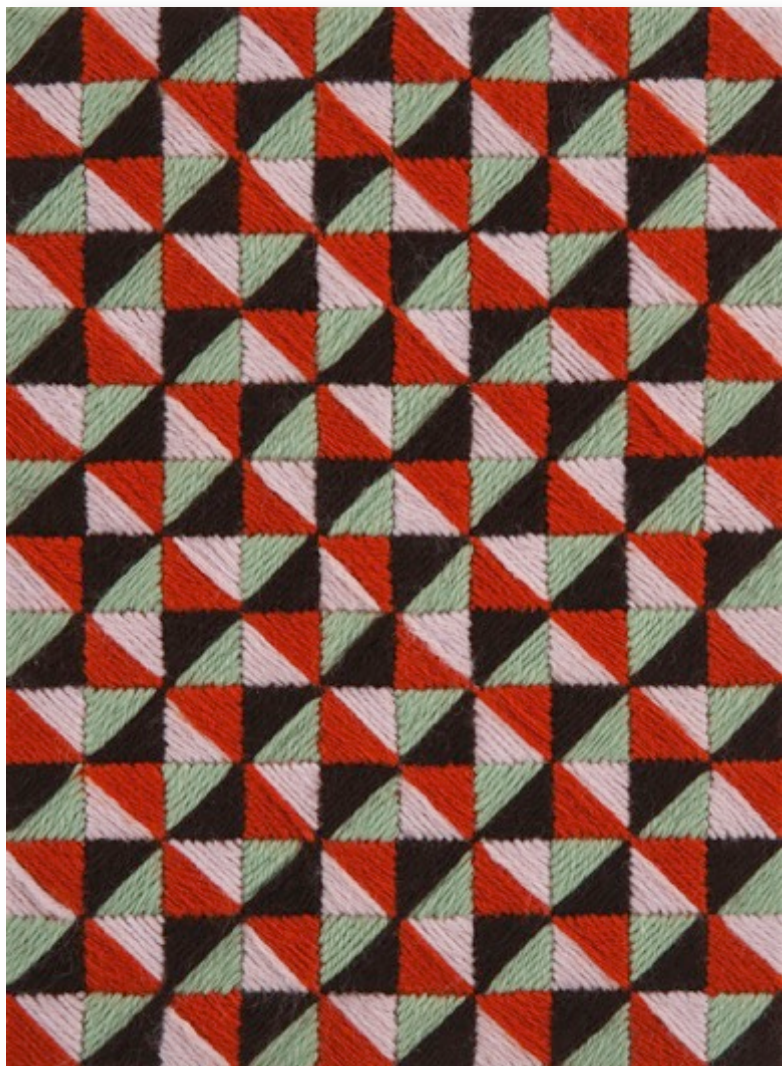
Susan Buret
Lepidoptera 7
2015, wool on canvas,
33x33cm

\$ 380



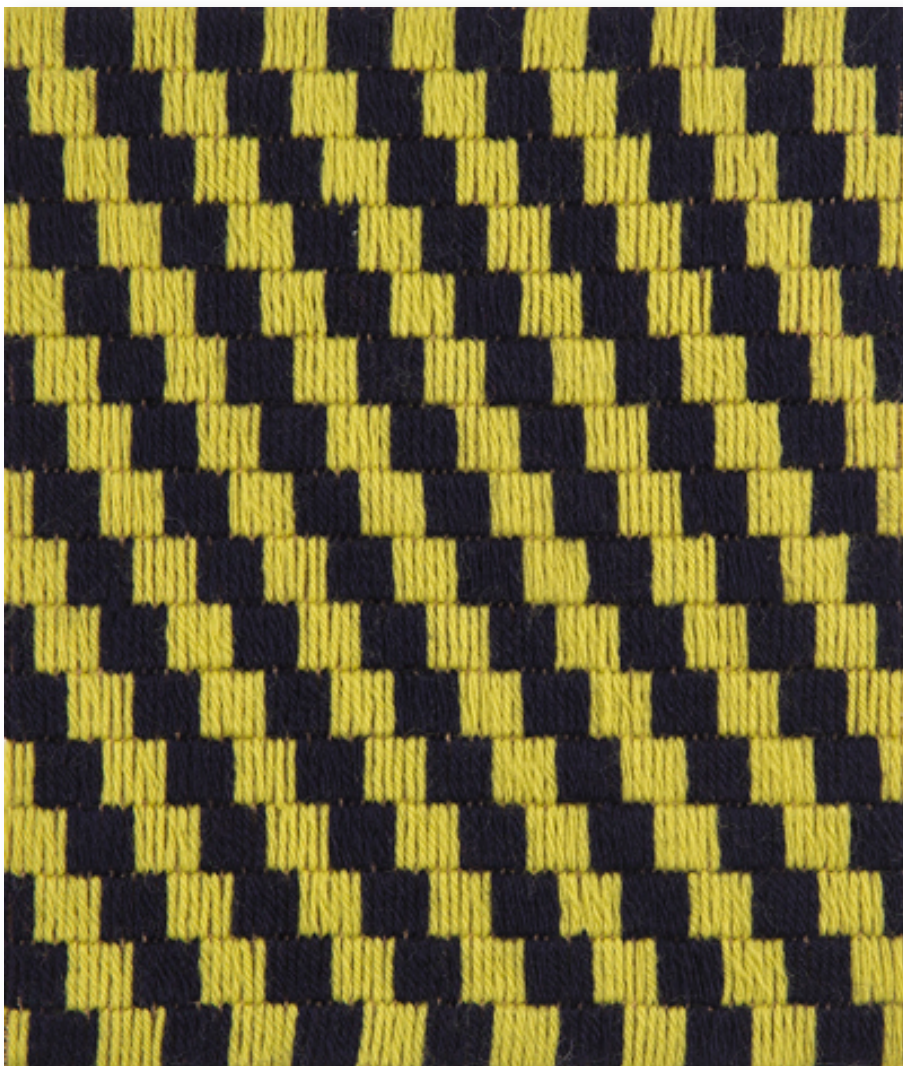
Susan Buret
Lepidoptera 8
2015, wool on canvas,
33x33cm

\$ 380



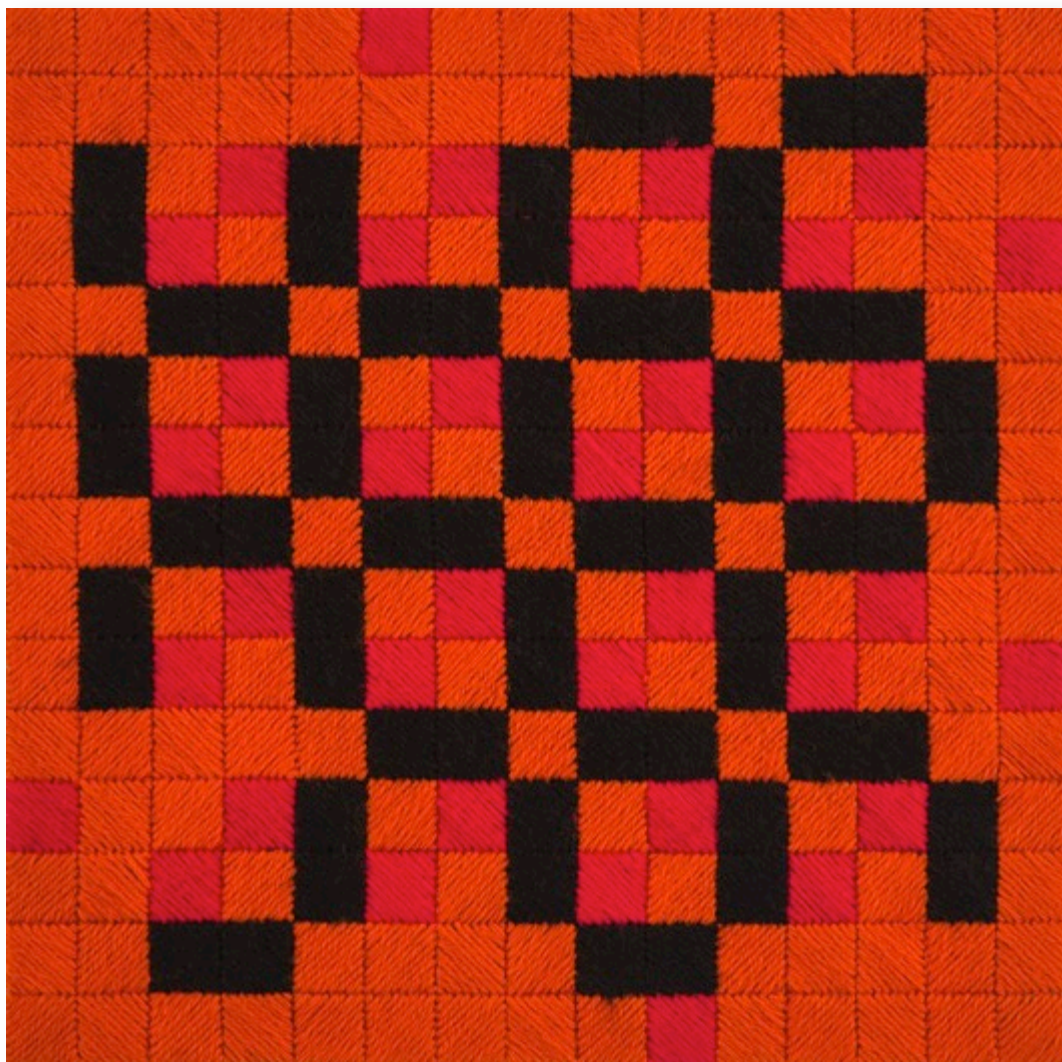
Susan Buret
Lepidoptera 9
2015, wool on canvas,
33x33cm

\$ 380



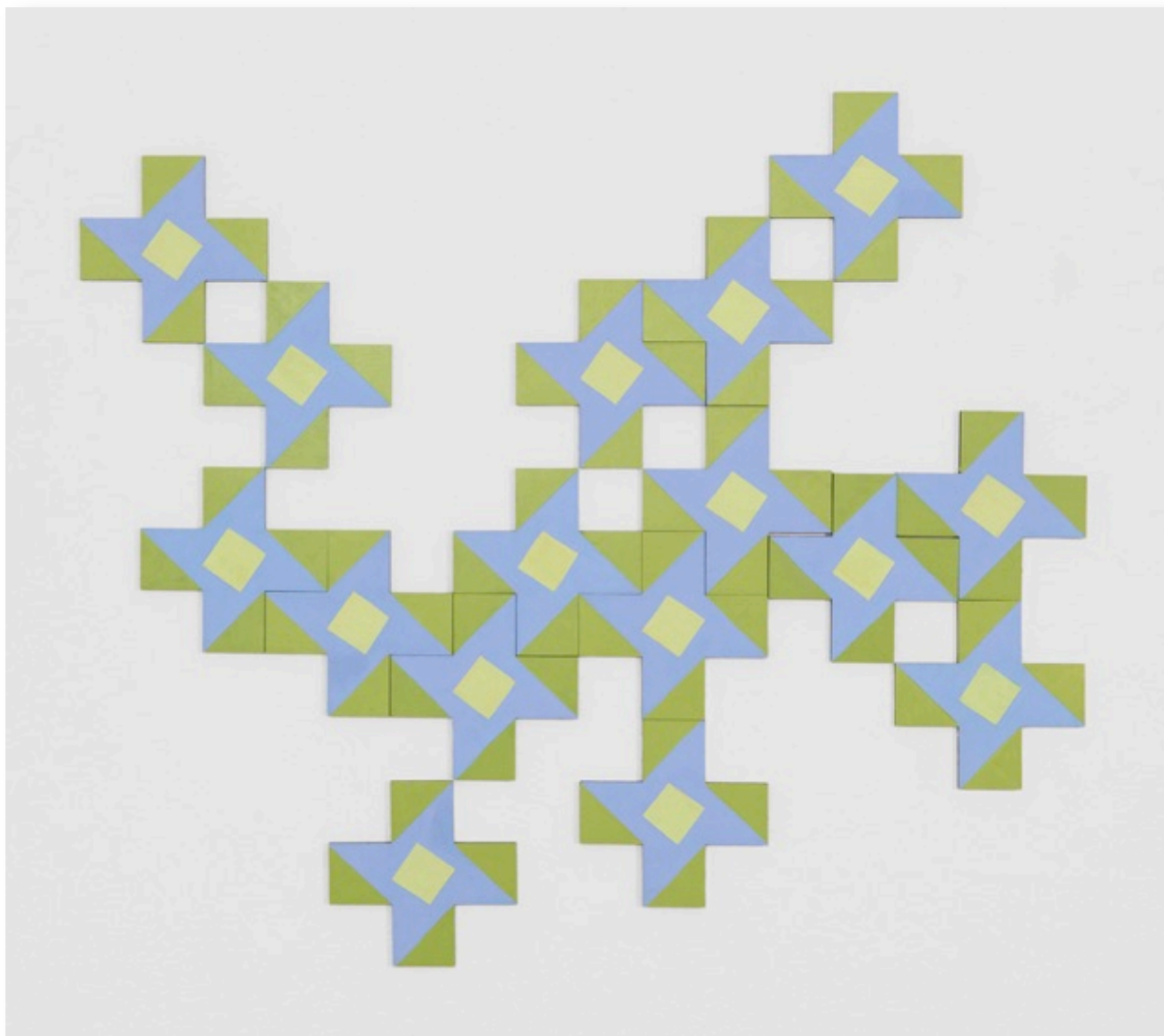
Susan Buret
Lepidoptera 10
2015, wool on canvas,
33x33cm

\$ 380



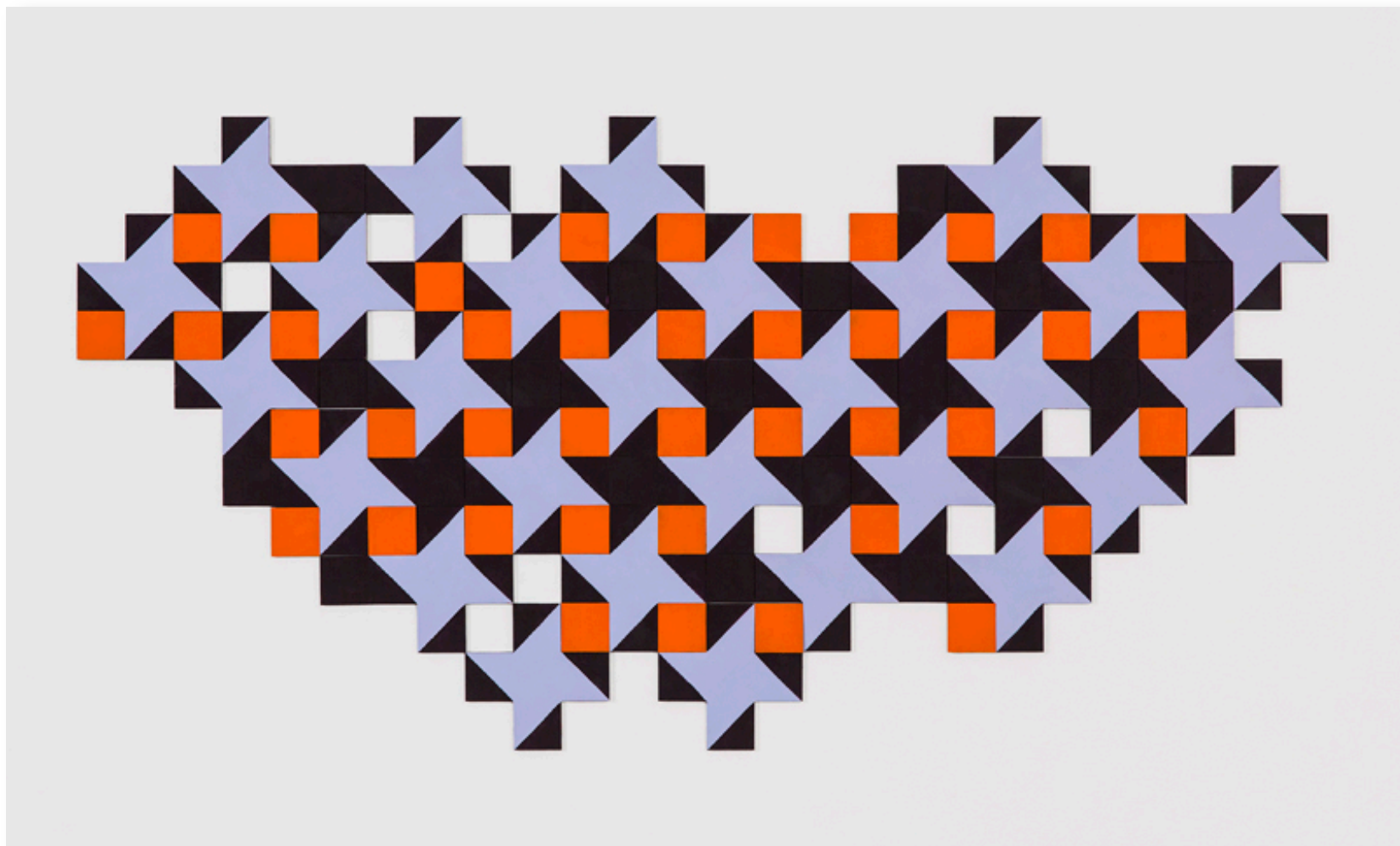
Susan Buret
Lepidoptera 11
2015, wool on canvas,
33x33cm

\$ 380



Susan Buret
Like a Butterfly
2015, flashe vinyl on board,
70x80cm

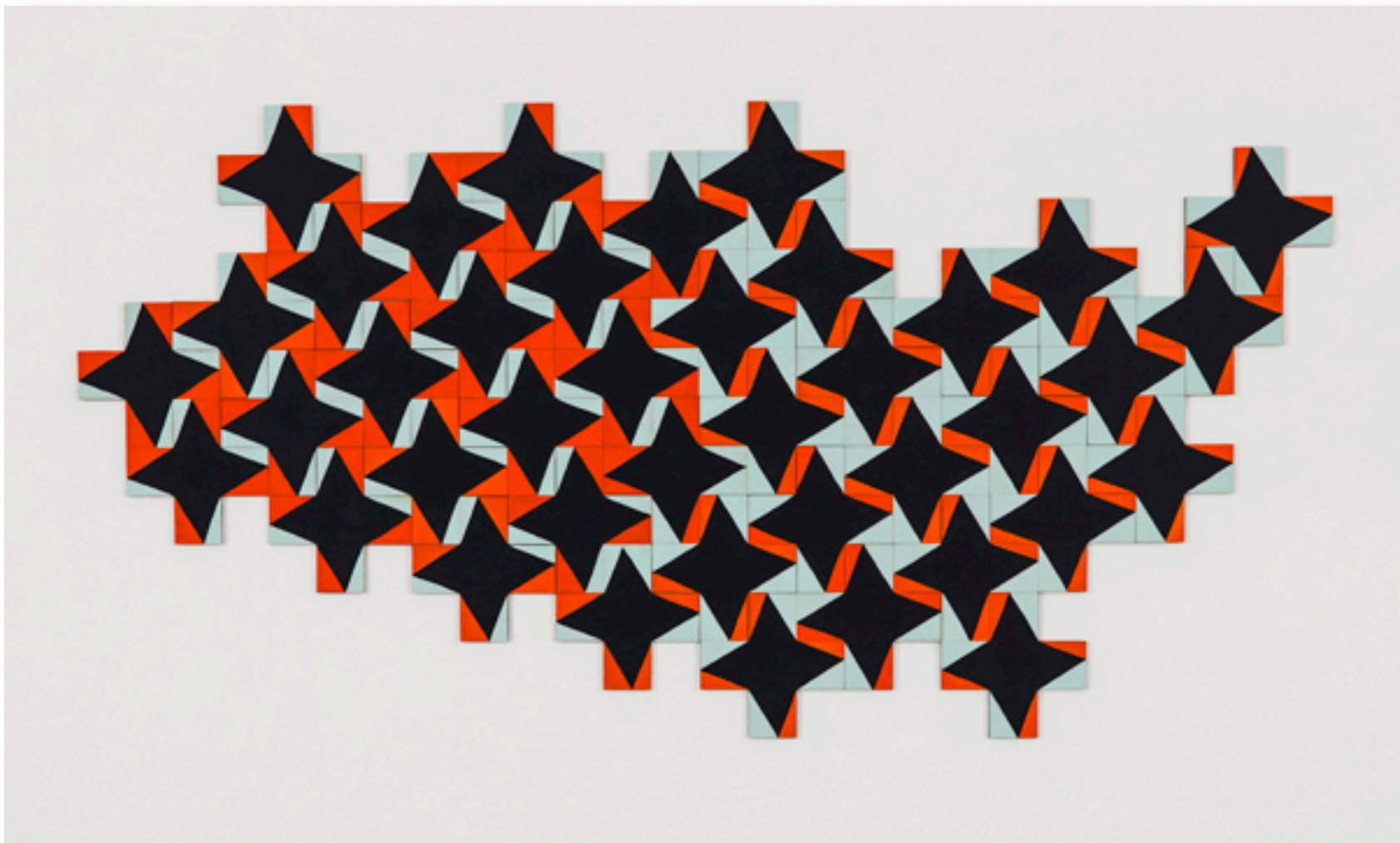
\$ 1,650



Susan Buret
Monarch

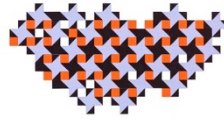
2015, flashe vinyl on board,
66x130cm

\$ 1,650



Susan Buret
Summer of Butterflies
2015, flashe vinyl on board,
66x135cm

\$ 1,650



STATEMENT

Triangulation refers to a dialogue between Brooke and Buret that concerns not only the geometric forms with which they work, but also the mathematical process of using two fixed points to determine a new, unknown value. Working two hundred kilometers apart, this dialogue often takes the form of intuitive responses to ideas expressed in emails and conversations, as well looking at and responding to works in progress.

In the summer of 2014 Brooke and Buret both began making work using the colours and forms of butterflies. Brooke's paintings arose from a collaboration with applied mathematicians who analyse complex structures inside butterfly wing scales, while Buret's work was informed by her observations of Blue Jewel butterflies, *Hypochrysops delicia*, in her garden. Using the shared visual language of grids and geometric forms, Brooke and Buret explore the possibilities of tapestry, painting and modular constructions to establish the third point of the triangle.

Susan Buret is a painter and installation artist living in the Southern Highlands of NSW. Buret has been the winner or finalist in several Australian art awards and has been artist in residence at Bundanon, Montsalvat, the Ragdale Foundation in Chicago and Cortijada Los Gasquez in southern Spain. Buret has exhibited throughout Australia and in France, Germany and the United States. Her work is held in public and private collections in Australia, New Zealand, Singapore the United States and Europe.

Julie Brooke is a Canberra-based painter and former biomedical scientist who investigates parallels between research in science and in the visual arts. She is a Research Fellow at the ANU School of Art and completed a practice-led visual arts PhD in 2013 for which she was awarded an ANU J. G. Crawford Award. Brooke was a Vice-Chancellor's Artist in Residence

GALLERY 45 MITH PROJECTSPACE

First Floor, 170 Abbotsford St North Melbourne
03 9329 1860 gsprojectspace@gmail.com

WWW.GSPROJECTSPACE.COM